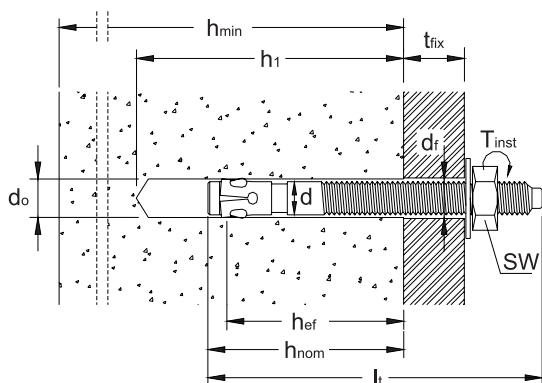


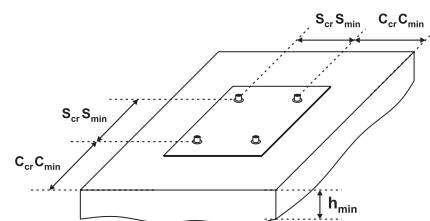
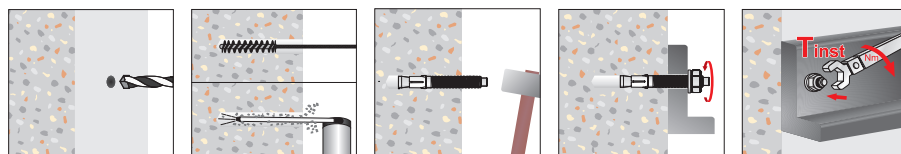
AJ 04 Ancorante con lamierino (acciaio zincato) dado e rondella, in acciaio zincato



SCHEDA TECNICA



| | |
|----------------------|---|
| $d_{nom} \times l_t$ | diametro esterno ancorante x lunghezza ancorante |
| M | diametro parte filettata |
| t_{fix} | spessore massimo fissabile |
| d_o | diametro del foro |
| h_1 | profondità del foro |
| h_{min} | spessore del materiale di supporto |
| h_{nom} | profondità di inserimento |
| h_{ef} | profondità effettiva di ancoraggio |
| d_f | diametro del foro nell'elemento da fissare |
| T_{inst} | coppia di serraggio raccomandata |
| SW | misura chiave |
| c_{min} | minima distanza dal bordo consentita |
| s_{min} | minimo interasse consentito |
| c_{cr} | distanza dal bordo che assicura la trasmissione della resistenza caratteristica di un ancoraggio singolo |
| s_{cr} | interasse tra ancoraggi in gruppo tale da assicurare la trasmissione della resistenza caratteristica di un ancoraggio singolo |



DATI TECNICI E RISULTATI DI PROVA SU ANCORANTI AJ 04 IN CALCESTRUZZO NON FESSURATO C20/25

| Codice Articolo | Misura Ancorante $d_{nom} \times l_t$ (mm) | t_{fix} (mm) | d_o (mm) | h_1 (mm) | h_{min} (mm) | h_{nom} (mm) | h_{ef} (mm) | d_f (mm) | T_{inst} (Nm) | SW (mm) | c_{min} (mm) | s_{min} (mm) | c_{cr} (mm) | s_{cr} (mm) | CARICO CARATTERISTICO (kN) | |
|-----------------|---|-------------------|---------------|---------------|-------------------|-------------------|------------------|---------------|--------------------|------------|-------------------|-------------------|------------------|------------------|-------------------------------|--------------|
| | | | | | | | | | | | | | | | ESTRAZIONE | TAGLIO |
| Ø 8 | | | | | | | | | | | | | | | | |
| AJ 04 08 075 | 8 x 75 | 10 | 8 | 65 | 100 | 50 | 40 | 9 | 15 | 13 | 60 | 80 | 60 | 120 | 5,72 | 6,90 |
| AJ 04 08 095 | 8 x 95 | 30 | | | | | | | | | | | | | | |
| AJ 04 08 115 | 8 x 115 | 50 | | | | | | | | | | | | | | |
| AJ 04 08 135 | 8 x 135 | 70 | | | | | | | | | | | | | | |
| Ø 10 | | | | | | | | | | | | | | | | |
| AJ 04 10 070 | 10 x 70 | 5 | 10 | 80 | 100 | 60 | 50 | 12 | 25 | 17 | 60 | 80 | 60 | 120 | ? | ? |
| AJ 04 10 080 | 10 x 80 | 5 | | | | | | | | | | | | | | |
| AJ 04 10 090 | 10 x 90 | 15 | | | | | | | | | | | | | | |
| AJ 04 10 100 | 10 x 100 | 25 | | | | | | | | | | | | | | |
| AJ 04 10 120 | 10 x 120 | 45 | | | | | | | | | | | | | | |
| AJ 04 10 140 | 10 x 140 | 65 | | | | | | | | | | | | | | |
| Ø 12 | | | | | | | | | | | | | | | | |
| AJ 04 12 080 | 12 x 80 | 5 | 12 | 100 | 110 | 70 | 55 | 14 | 45 | 19 | 90 | 110 | 82,5 | 165 | 16,87 | 15,60 |
| AJ 04 12 095 | 12 x 95 | 5 | | | | | | | | | | | | | | |
| AJ 04 12 110 | 12 x 110 | 20 | | | | | | | | | | | | | | |
| AJ 04 12 130 | 12 x 130 | 40 | | | | | | | | | | | | | | |
| AJ 04 12 160 | 12 x 160 | 70 | | | | | | | | | | | | | | |
| AJ 04 12 280 | 12 x 280 | 190 | | | | | | | | | | | | | | |
| Ø 16 | | | | | | | | | | | | | | | | |
| AJ 04 16 125 | 16 x 125 | 5 | 16 | 130 | 150 | 95 | 75 | 18 | 110 | 24 | 100 | 150 | 112,5 | 225 | 23,14 | 27,60 |
| AJ 04 16 145 | 16 x 145 | 25 | | | | | | | | | | | | | | |
| AJ 04 16 180 | 16 x 180 | 60 | | | | | | | | | | | | | | |
| Ø 24 | | | | | | | | | | | | | | | | |
| AJ0424160 | 24 x 160 | 10 | 24 | 140 | 210 | 130 | 105 | 26 | 200 | 36 | 140 | 280 | 160 | 320 | 26,45 | 75,10 |
| AJ0424200 | 24 x 200 | 30 | | | | | | | | | | | | | | |
| AJ0424260 | 24 x 260 | 90 | | | | | | | | | | | | | | |
| AJ0424310 | 24 x 310 | 140 | | | | | | | | | | | | | | |

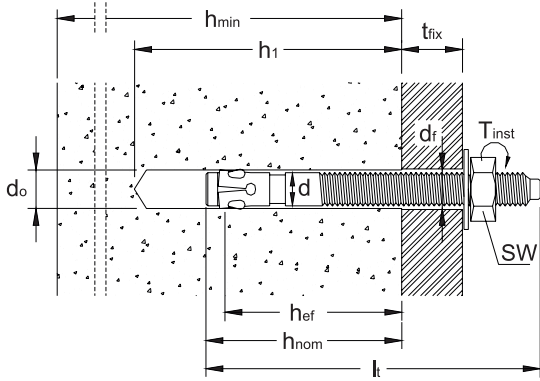
Per i dati non inseriti in tabella rivolgersi al Laboratorio Tecfi

In tabella sono indicati i CARICHI CARATTERISTICI per prove effettuate su calcestruzzo C20/25 non fessurato senza influenza del bordo e/o dell'interasse (valori di estrazione e taglio in kN: 1kN = 100Kg).

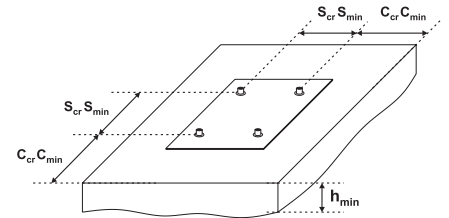
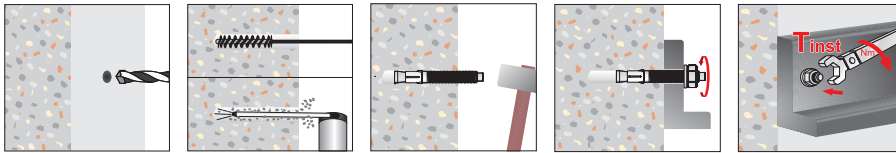
AJ 04 Wedge anchor with steel clip, assembled with hex nut and washer, zinc plated



TECHNICAL DATA SHEET



| | |
|----------------------|---|
| $d_{nom} \times l_t$ | anchor diameter x anchor length |
| M | screw diameter |
| t_{fix} | maximum thickness of fixture |
| d_o | drill hole diameter |
| h_1 | depth of drill hole |
| h_{min} | thickness of concrete member |
| h_{nom} | overall anchor embedment depth |
| h_{ef} | effective anchorage depth |
| d_f | diameter of clearance hole in the fixture |
| T_{inst} | required torque moment |
| SW | wrench size |
| c_{min} | minimum allowable edge distance |
| s_{min} | minimum allowable spacing |
| c_{cr} | edge distance for ensuring the transmission of the characteristic resistance of a single anchor |
| s_{cr} | spacing for ensuring the transmission of the characteristic resistance of a single anchor |



TECHNICAL DATA AND TEST REPORT OF AJ 04 ANCHORS IN NON-CRACKED CONCRETE C20/25

| Item Code | Anchor Size $d_{nom} \times l_t$ (mm) | t_{fix} (mm) | d_o (mm) | h_1 (mm) | h_{min} (mm) | h_{nom} (mm) | h_{ef} (mm) | d_f (mm) | T_{inst} (Nm) | SW (mm) | c_{min} (mm) | s_{min} (mm) | c_{cr} (mm) | s_{cr} (mm) | CHARACTERISTIC LOADS (kN) | |
|--------------|--|-------------------|---------------|---------------|-------------------|-------------------|------------------|---------------|--------------------|-------------------|-------------------|-------------------|------------------|------------------|------------------------------|--------------|
| | | | | | | | | | | | | | | | PULL OUT | SHEAR |
| Ø 8 | | | | | | | | | | | | | | | | |
| AJ 04 08 075 | 8 x 75 | 10 | 8 | 65 | 100 | 50 | 40 | 9 | 15 | 13 | 60 | 80 | 60 | 120 | 5,72 | 6,90 |
| AJ 04 08 095 | 8 x 95 | 30 | | | | | | | | | | | | | | |
| AJ 04 08 115 | 8 x 115 | 50 | | | | | | | | | | | | | | |
| AJ 04 08 135 | 8 x 135 | 70 | | | | | | | | | | | | | | |
| Ø 10 | | | | | | | | | | | | | | | | |
| AJ 04 10 070 | 10 x 70 | 5 | 10 | 80 | 100 | 60 | 50 | 12 | 25 | 17 | 70 | 100 | 75 | 150 | 9,10 | 11,11 |
| AJ 04 10 080 | 10 x 80 | 5 | | | | | | | | | | | | | | |
| AJ 04 10 090 | 10 x 90 | 15 | | | | | | | | | | | | | | |
| AJ 04 10 100 | 10 x 100 | 25 | | | | | | | | | | | | | | |
| AJ 04 10 120 | 10 x 120 | 45 | | | | | | | | | | | | | | |
| AJ 04 10 140 | 10 x 140 | 65 | | | | | | | | | | | | | | |
| Ø 12 | | | | | | | | | | | | | | | | |
| AJ 04 12 080 | 12 x 80 | 5 | 12 | 100 | 110 | 70 | 55 | 14 | 45 | 19 | 90 | 110 | 82,5 | 165 | 16,87 | 15,60 |
| AJ 04 12 095 | 12 x 95 | 5 | | | | | | | | | | | | | | |
| AJ 04 12 110 | 12 x 110 | 20 | | | | | | | | | | | | | | |
| AJ 04 12 130 | 12 x 130 | 40 | | | | | | | | | | | | | | |
| AJ 04 12 160 | 12 x 160 | 70 | | | | | | | | | | | | | | |
| AJ 04 12 280 | 12 x 280 | 190 | | | | | | | | | | | | | | |
| Ø 16 | | | | | | | | | | | | | | | | |
| AJ 04 16 125 | 16 x 125 | 5 | 16 | 130 | 150 | 95 | 75 | 18 | 110 | 24 | 100 | 150 | 112,5 | 225 | 23,14 | 27,60 |
| AJ 04 16 145 | 16 x 145 | 25 | | | | | | | | | | | | | | |
| AJ 04 16 180 | 16 x 180 | 60 | | | | | | | | | | | | | | |
| Ø 24 | | | | | | | | | | | | | | | | |
| AJ0424160 | 24 x 160 | 10 | 24 | 140 | 210 | 130 | 105 | 26 | 200 | 36 | 140 | 280 | 160 | 320 | 26,45 | 75,10 |
| AJ0424200 | 24 x 200 | 30 | | | | | | | | | | | | | | |
| AJ0424260 | 24 x 260 | 90 | | | | | | | | | | | | | | |
| AJ0424310 | 24 x 310 | 140 | | | | | | | | | | | | | | |

For all specification not included in the table, please contact Tecfi Lab

Pull-out and shear showed in the table are CHARACTERISTIC LOADS from tests run on non-cracked concrete C20/25 without edge and spacing effect (Pull-out and shear loads are in kN: 1kN = 100Kg).